

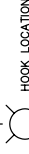
NOTES:

1. LIFTING EQUIPMENT IS SENT TO JOB SITE TO OFF-LOAD MAJOR ITEMS. EQUIPMENT IS TO BE CONSIDERED ON LOAN BY GEPLP AND IS TO BE RETURNED IN GOOD WORKING ORDER.
2. ALL CABLE SLINGS TO HAVE GEPLP DRAWING NUMBER REFERENCES WITH RESPECTIVE WEIGHT CAPACITIES AND LENGTHS PERMANENTLY STAMPED AT BOTH ENDS
3. HOOK LOAD INCLUDES LIFT HARDWARE WEIGHT WHICH IS 7 KIPS FOR MAIN UNIT LIFTS AND 3 KIPS FOR ALL OTHER LIFTS.
4. CABLE SLING DESIGNATED IMRC/EPS IS AN ABBREVIATION FOR INDEPENDENT WIRE ROPE CORE/EXTRA IMPROVED PLOW STEEL.
5. APPROVED EQUAL MUST INCLUDE A MINIMUM RATED OR WORKING LOAD OF 6 TIMES THE MINIMUM ULTIMATE LOAD OR BREAKING STRENGTH.
6. DIMENSIONS SHOWN IN [] ARE EXPRESSED IN SI UNITS AND ARE FOR REFERENCE ONLY. UNIT WILL BE DESIGNED AND BUILT USING ENGLISH UNITS.
7. TURBINE ROOM LIFT IS MADE WITH LM6000 ENGINE.
8. GENERATOR ROOM LIFT IS MADE WITH LM6000 ENGINE.
9. DO NOT USE LIFTING ARRANGEMENT OF SHEET 2: GENERATOR ROOM (WITHOUT GENERATOR), TO LIFT ENCLOSURE WITH GENERATOR.

LEGEND:



CENTER OF GRAVITY



HOOK LOCATION



CENTER OF GRAVITY AND HOOK LOCATION COINCIDE

QTY	REQD	PART OR IDENTIFYING NO.	MANUFACTURE OR DESCRIPTION	PARTS LIST	NEW NO.
2		J04792	SLING	2" DIA. 19"-10" B/B STD EYE BOTH ENDS (6X49 IMRC) EPS	28
1		377A2450P0001	LIFTING STAB, SYS	CROSBY 5/8" X 35" SAB TYPE CHAIN	27
4		G-2140-80T	SHACKLE	CROSBY G-2140 80 TON S.W.L. (CROSBY OR APPROVED EQUAL)	26
4		J01776	SLING	2" DIA X 10'-0" B/B STD EYE BOTH ENDS (6X49 IMRC EPS)	25
4		J02564	SLING	2" DIA X 10'-0" B/B STD EYE BOTH ENDS (6X49 IMRC EPS)	24
4		J02615	SLING	2" DIA X 19'-4" BOTH ENDS (6X49 IMRC EPS)	23
4		G-2130-25T	SHACKLE	CROSBY G-2140 25 TON S.W.L. (CROSBY OR APPROVED EQUAL)	22
2		J02128	SLING	2" DIA X 15'-0" B/B STD EYE BOTH ENDS (6X49 IMRC EPS)	21
1		424621	SPREADER BAR	GENERATOR LIFT SPREADER BAR	20
4		G209-A-5T	ANCHOR, SHACKLE	CROSBY 5/8" NOMINAL SIZE	19
2		J02566	SLING	2" DIA X 26'-0" B/B STD EYE BOTH ENDS (6X49 IMRC EPS)	18
4		335704	LIFTING PIN	UNIT LIFT PIN (TURBINE ROOM)	17
4		J01352	SLING	1 1/4" DIA X 11'-3" B/B STD EYE BOTH ENDS (6X49 IMRC EPS)	16
1		287336	SPREADER BAR	AIR FILTER HOUSE SPREADER BAR	15
12		J00475	NUT	HEX HEAD, 5/8" NC, GR 5	14
12		J00410	WASHER	LOCK, 5/8"	13
12		J00401	WASHER	FLAT, 5/8"	12
4		587127	EYE BOLT	AUSTIN 5/8"NC x 1 3/4" 1000# SWL @ 45°	11
4		G209-A-12.5T	ANCHOR, SHACKLE	CROSBY, 1" NOMINAL SIZE MODEL G-209	10
4		278044	LIFTING PIN	UNIT LIFT PIN (GENERATOR ROOM)	9
1		285664	SPREADER BAR	GENERATOR LIFT SPREADER BAR	8
4		G-2130-17T	SHACKLE	CROSBY G-2130 17 TON S.W.L. (CROSBY OR APPROVED EQUAL)	7
4		J02565	SLING	2" DIA X 10'-0" B/B STD EYE BOTH ENDS (6 X 49 IMRC EPS)	6
8		G-2140-80T	SHACKLE	CROSBY G-2140 80 TON S.W.L. (CROSBY OR APPROVED EQUAL)	5
2		270127	SPREADER BAR	UNIT LIFT SPREADER BAR	4
4		J04776	SLING	2" DIA X 23'-0" B/B STD EYE BOTH ENDS (6 X 49 IMRC EPS)	3
4		J04775	SLING	2" DIA X 23'-8" B/B STD EYE BOTH ENDS (6 X 49 IMRC EPS)	2
4		J04773	SLING	2 1/2" DIA X 15'-0" B/B STD EYE BOTH ENDS (6 X 49 IMRC EPS)	1
MATERIAL SPECIFICATION					

ADD. INFO



UNLESS OTHERWISE SPECIFIED
ALL DIMENSIONS ARE IN INCHES
DO NOT SCALE DRAWING
TOLERANCES
FRACTIONAL
DECIMALS
XX ± .05
XX ± .005
XX ± .01

ANGULAR
±1°

NEAT ASST.

REV

DATE

QTY

DESCRIPTION

LLM

01/27/04

MO

RWH

GF

DESIGN

ISS

ACT

QUALITY

REVISIONS

DESCRIPTION

LLM

01/27/04

MO

RWH

DESIGN

ISS

ACT

QUALITY

REVISIONS

DESCRIPTION

LLM

01/27/04

MO

RWH

DESIGN

ISS

ACT

QUALITY

REVISIONS

DESCRIPTION

LLM

01/27/04

MO

RWH

DESIGN

ISS

ACT

QUALITY

REVISIONS

DESCRIPTION

LLM

01/27/04

MO

RWH

DESIGN

ISS

ACT

QUALITY

REVISIONS

DESCRIPTION

LLM

01/27/04

MO

RWH

DESIGN

ISS

ACT

QUALITY

REVISIONS

DESCRIPTION

LLM

01/27/04

MO

RWH

DESIGN

ISS

ACT

QUALITY

REVISIONS

DESCRIPTION

LLM

01/27/04

MO

RWH

DESIGN

ISS

ACT

QUALITY

REVISIONS

DESCRIPTION

LLM

01/27/04

MO

RWH

DESIGN

ISS

ACT

QUALITY

REVISIONS

DESCRIPTION

LLM

01/27/04

MO

RWH

DESIGN

ISS

ACT

QUALITY

REVISIONS

DESCRIPTION

LLM

01/27/04

MO

RWH

DESIGN

ISS

ACT

QUALITY

REVISIONS

DESCRIPTION

LLM

01/27/04

MO

RWH

DESIGN

ISS

ACT

QUALITY

REVISIONS

DESCRIPTION

LLM

01/27/04

MO

RWH

DESIGN

ISS

ACT

QUALITY

REVISIONS

DESCRIPTION

LLM

01/27/04

MO

RWH

DESIGN

ISS

ACT

QUALITY

REVISIONS

DESCRIPTION

LLM

01/27/04

MO

RWH

DESIGN

ISS

ACT

QUALITY

REVISIONS

DESCRIPTION

LLM

01/27/04

MO

RWH

DESIGN

ISS

ACT

QUALITY

REVISIONS

DESCRIPTION

LLM

01/27/04

MO

RWH

DESIGN

ISS

ACT

QUALITY

REVISIONS

DESCRIPTION

LLM

01/27/04

MO

RWH

DESIGN

ISS

ACT

QUALITY

REVISIONS

DESCRIPTION

LLM

01/27/04

MO

RWH

DESIGN

ISS

ACT

QUALITY

REVISIONS

DESCRIPTION

LLM

01/27/04

MO

RWH

DESIGN

ISS

ACT

QUALITY

REVISIONS

DESCRIPTION

LLM

01/27/04

MO

RWH

DESIGN

ISS

ACT

QUALITY

REVISIONS

DESCRIPTION

LLM

01/27/04

MO

RWH

DESIGN

ISS

ACT

QUALITY

REVISIONS

DESCRIPTION

LLM

01/27/04

MO

RWH

DESIGN

ISS

ACT

QUALITY

REVISIONS

DESCRIPTION

LLM

01/27/04

MO

RWH

DESIGN

ISS

ACT

QUALITY

REVISIONS

DESCRIPTION

LLM

01/27/04

MO

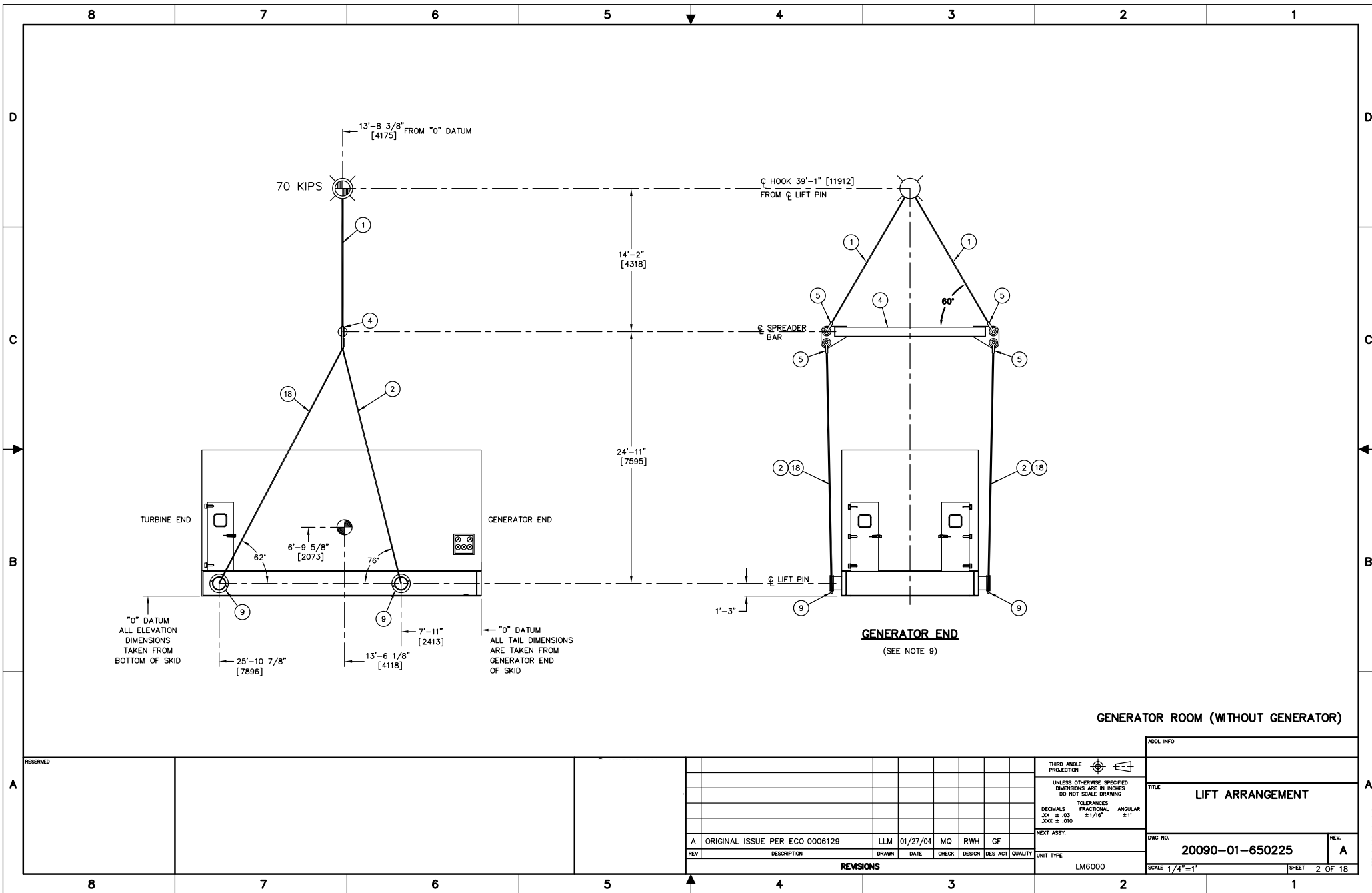
RWH

DESIGN

ISS

ACT

QUALITY



GENERATOR ROOM (WITHOUT GENERATOR)

RESERVED

REV	DESCRIPTION	DRAWN	DATE	CHECK	DESIGN	DES ACT	QUALITY
A	ORIGINAL ISSUE PER ECO 0006129	LLM	01/27/04	MQ	RWH	GF	

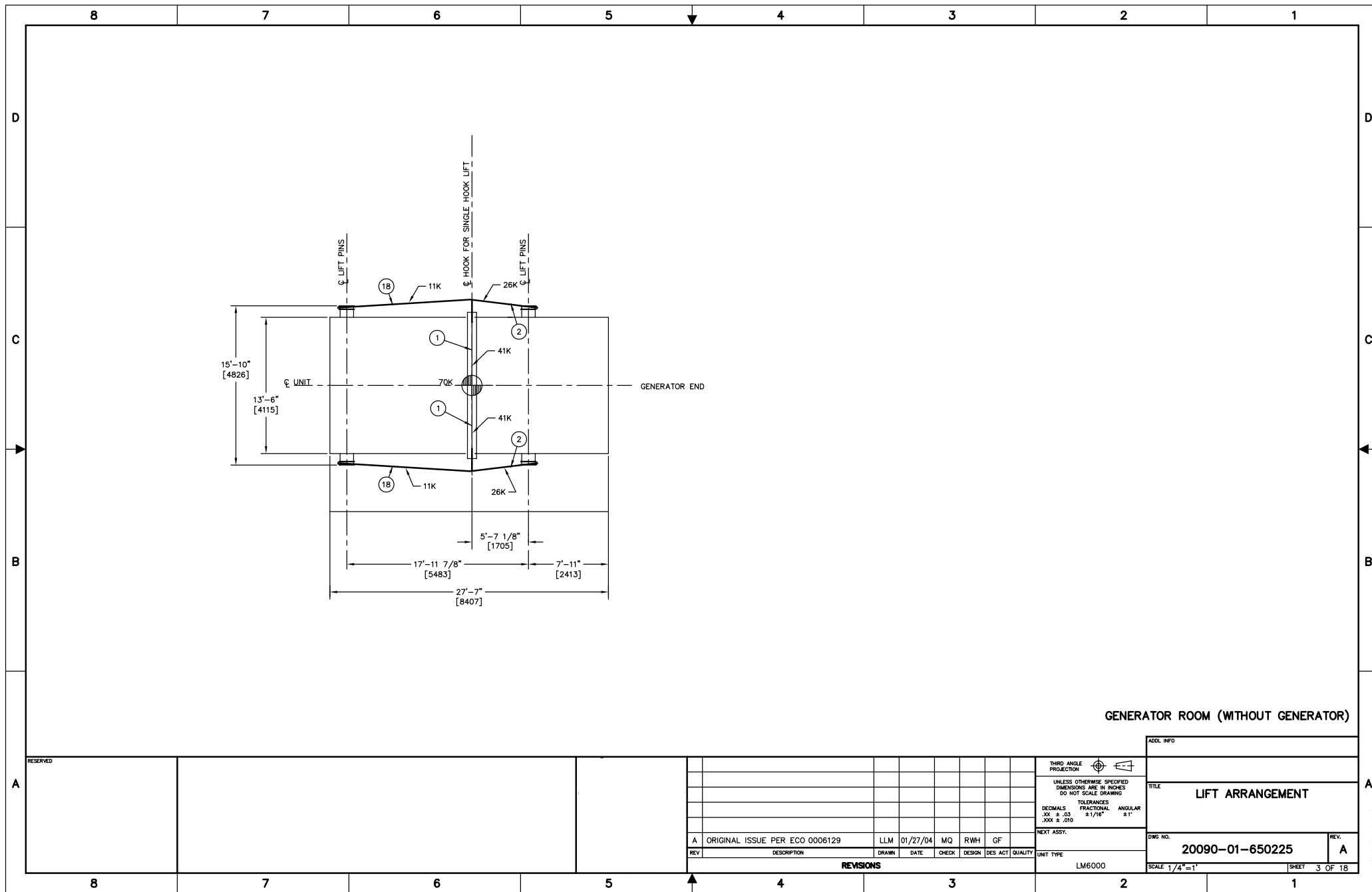
REVISIONS

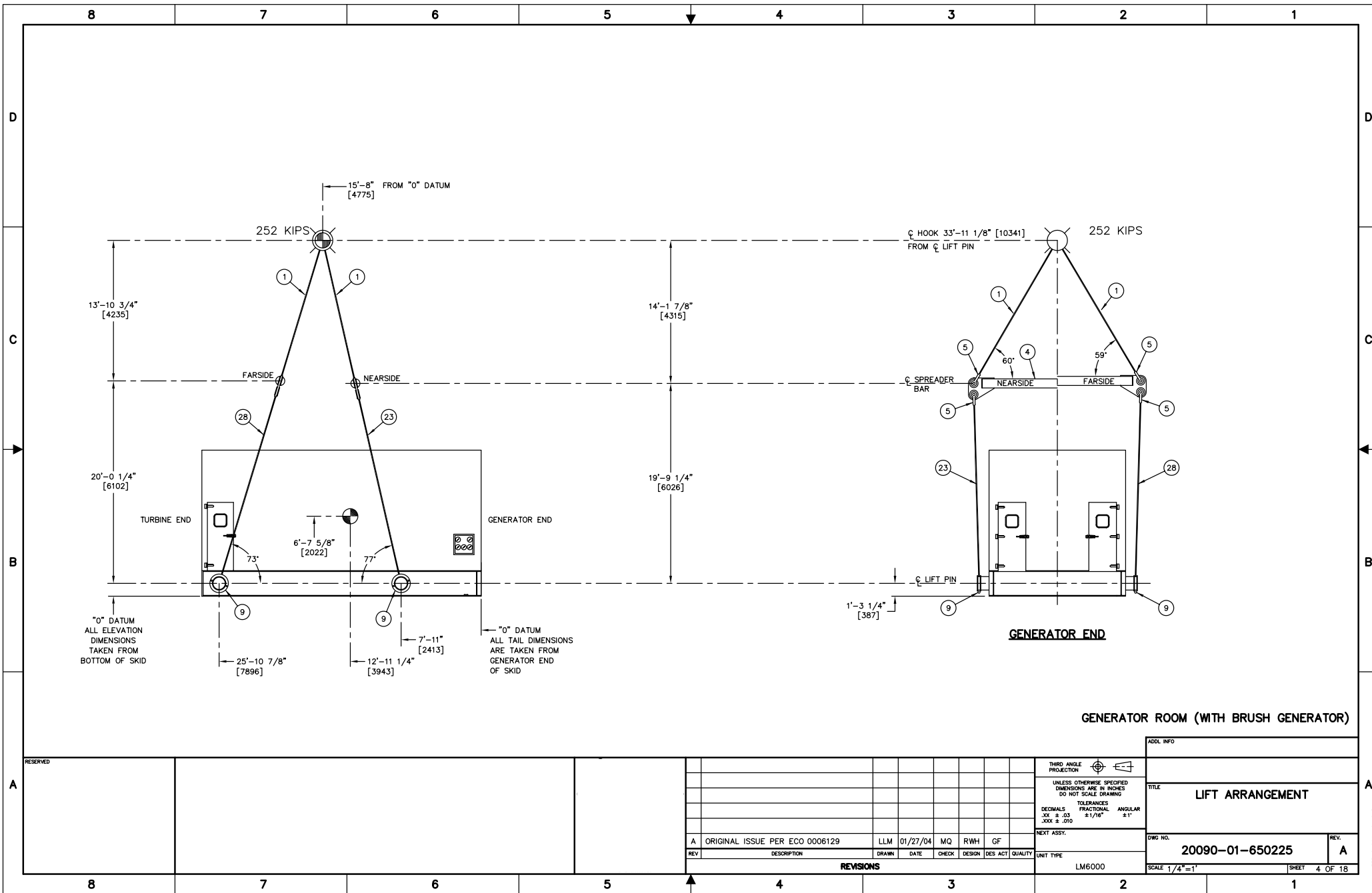
THIRD ANGLE PROJECTION
UNLESS OTHERWISE SPECIFIED DIMENSIONS ARE IN INCHES DO NOT SCALE DRAWING
TOLERANCES DECIMALS .XX ± .03 FRACTIONAL 1/16" ± 1"
ANGULAR ± 1°

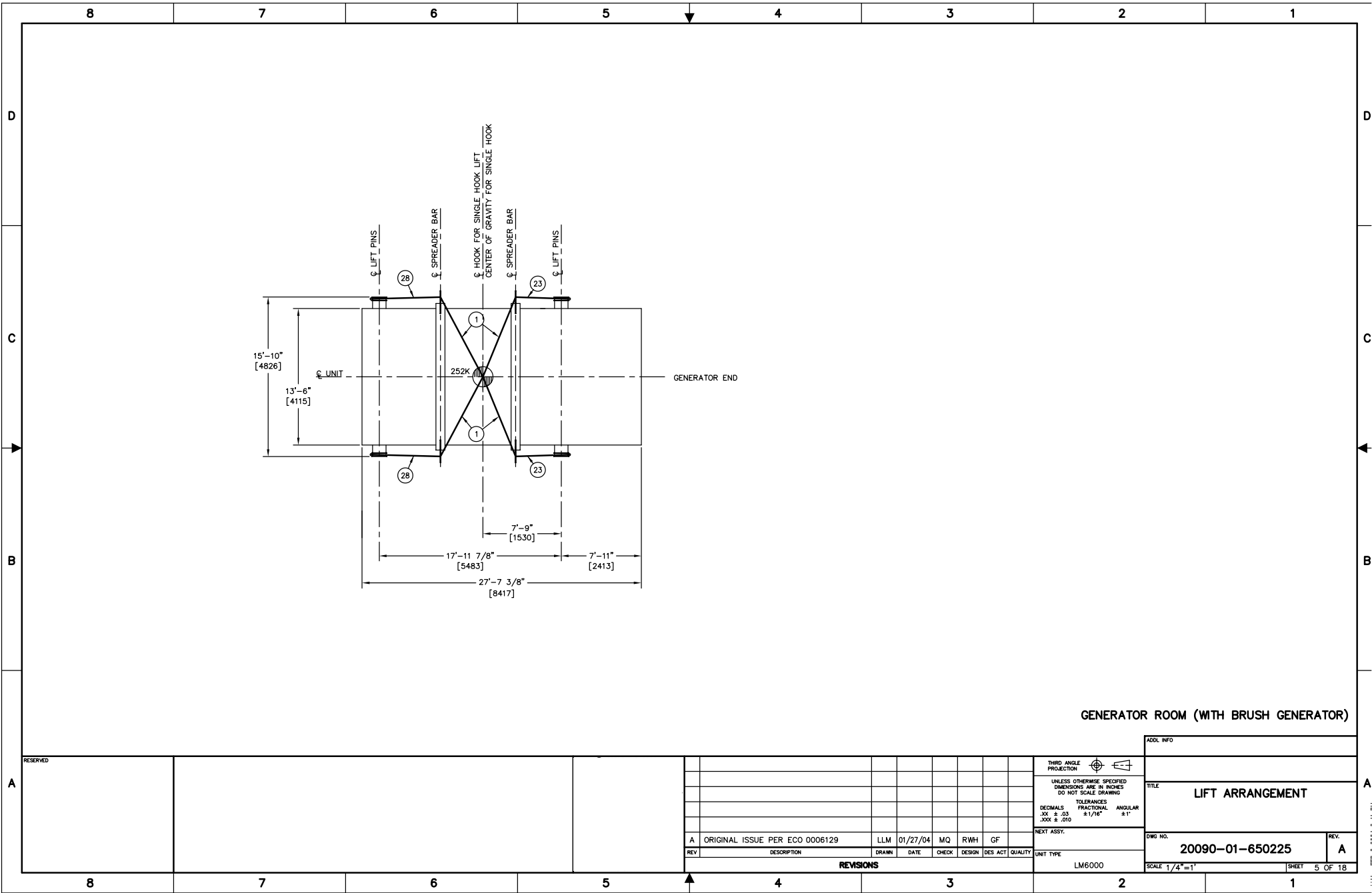
NEXT ASSY:

LM6000

ADDITIONAL INFO
TITLE LIFT ARRANGEMENT
DWG NO. 20090-01-650225
REV. A
SCALE 1/4"=1'
SHEET 2 OF 18







GENERATOR ROOM (WITH BRUSH GENERATOR)

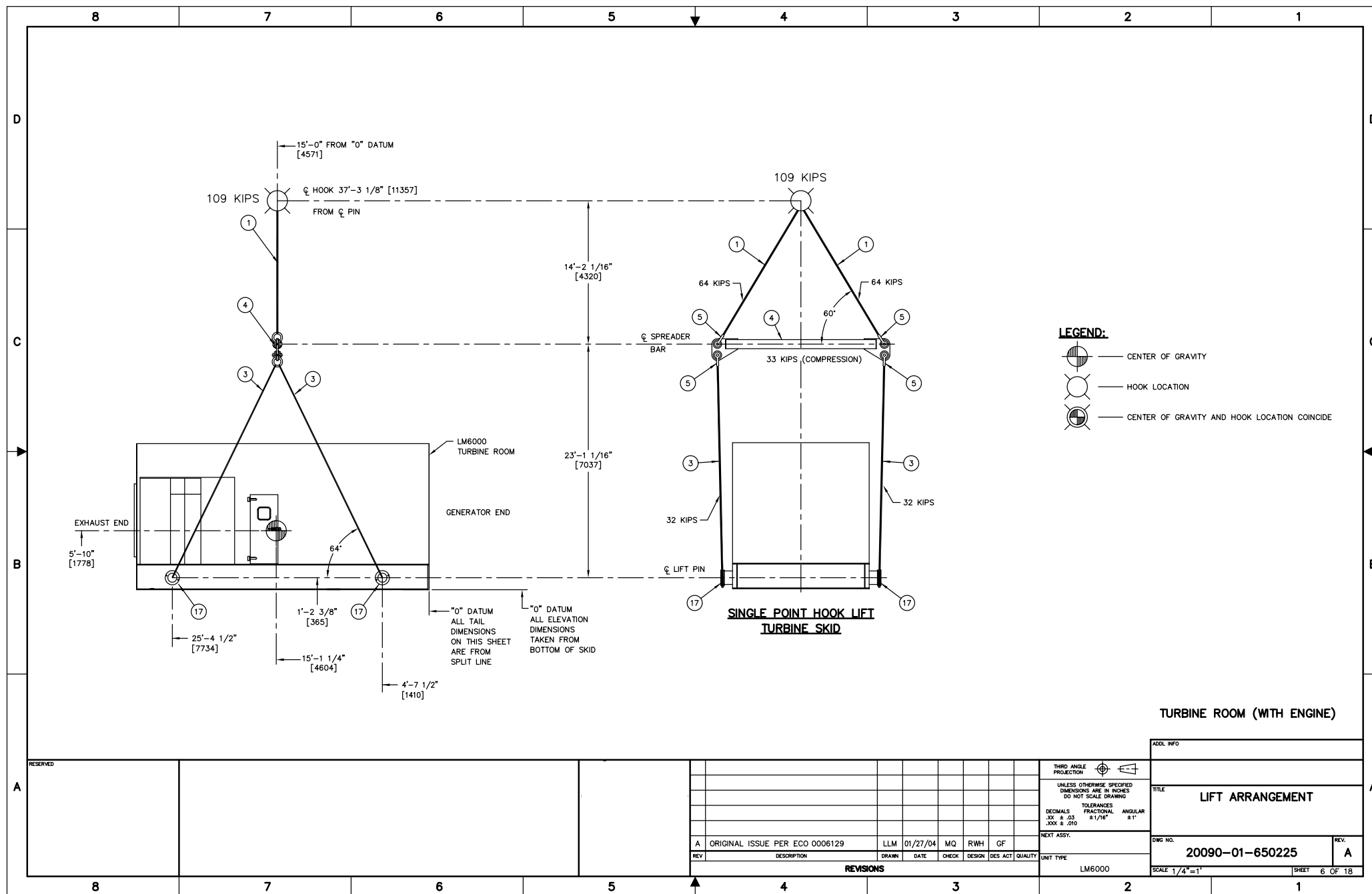
RESERVED

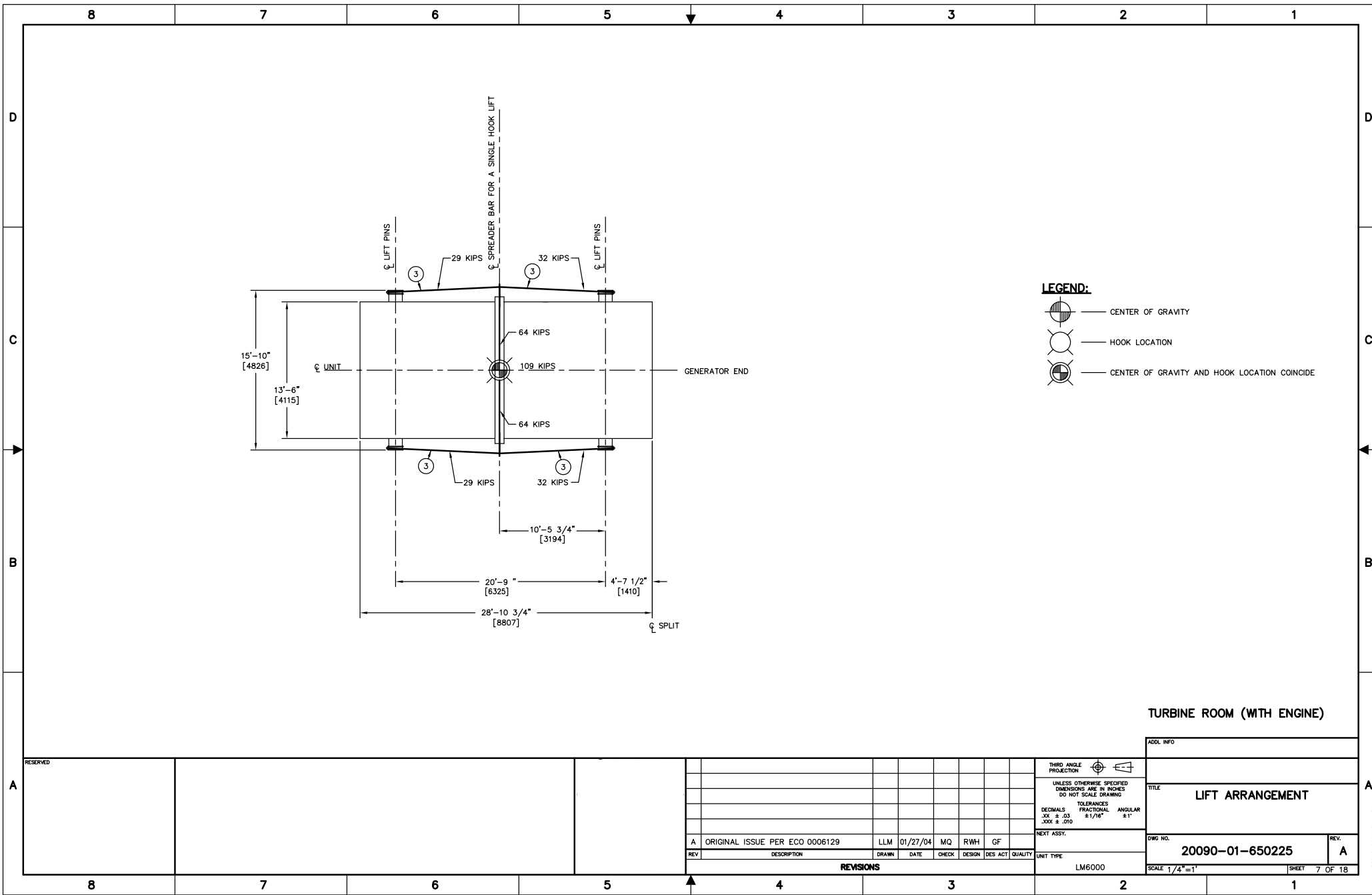
REVISIONS						
REV	DESCRIPTION	DRAWN	DATE	CHECK	DESIGN	DES ACT QUALITY
A	ORIGINAL ISSUE PER ECO 0006129	LLM	01/27/04	MQ	RWH	GF

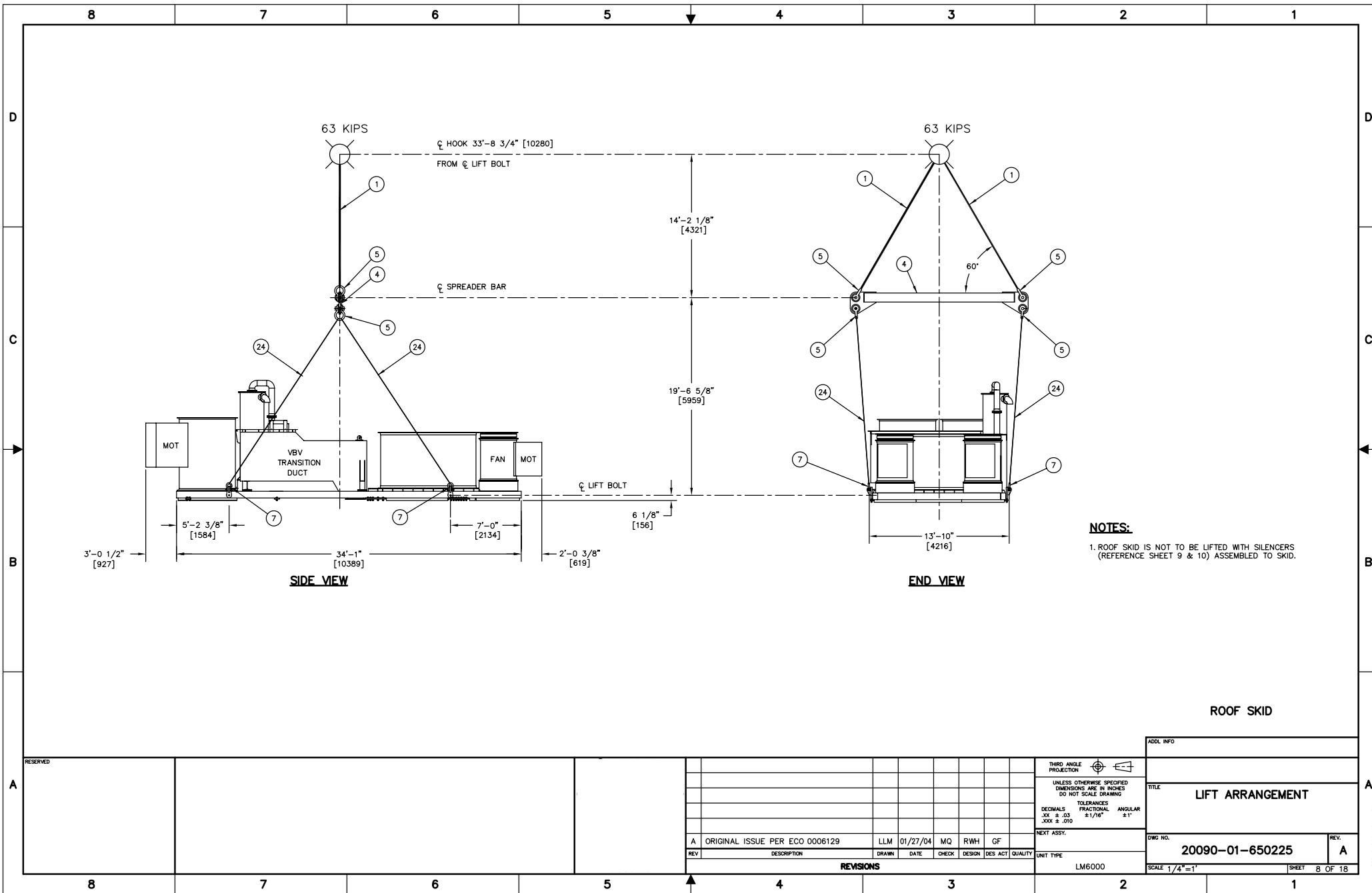
THIRD ANGLE PROJECTION
UNLESS OTHERWISE SPECIFIED DIMENSIONS ARE IN INCHES DO NOT SCALE DRAWING
TOLERANCES
DECIMALS FRACTIONAL ANGULAR
XX ± .03 ± 1/16" ± 1°
XXX ± .010

NEXT ASSY:
LM6000

ADDITIONAL INFO	
TITLE LIFT ARRANGEMENT	
DWG NO. 20090-01-650225	REV. A
SCALE 1/4"=1' SHEET 5 OF 18	



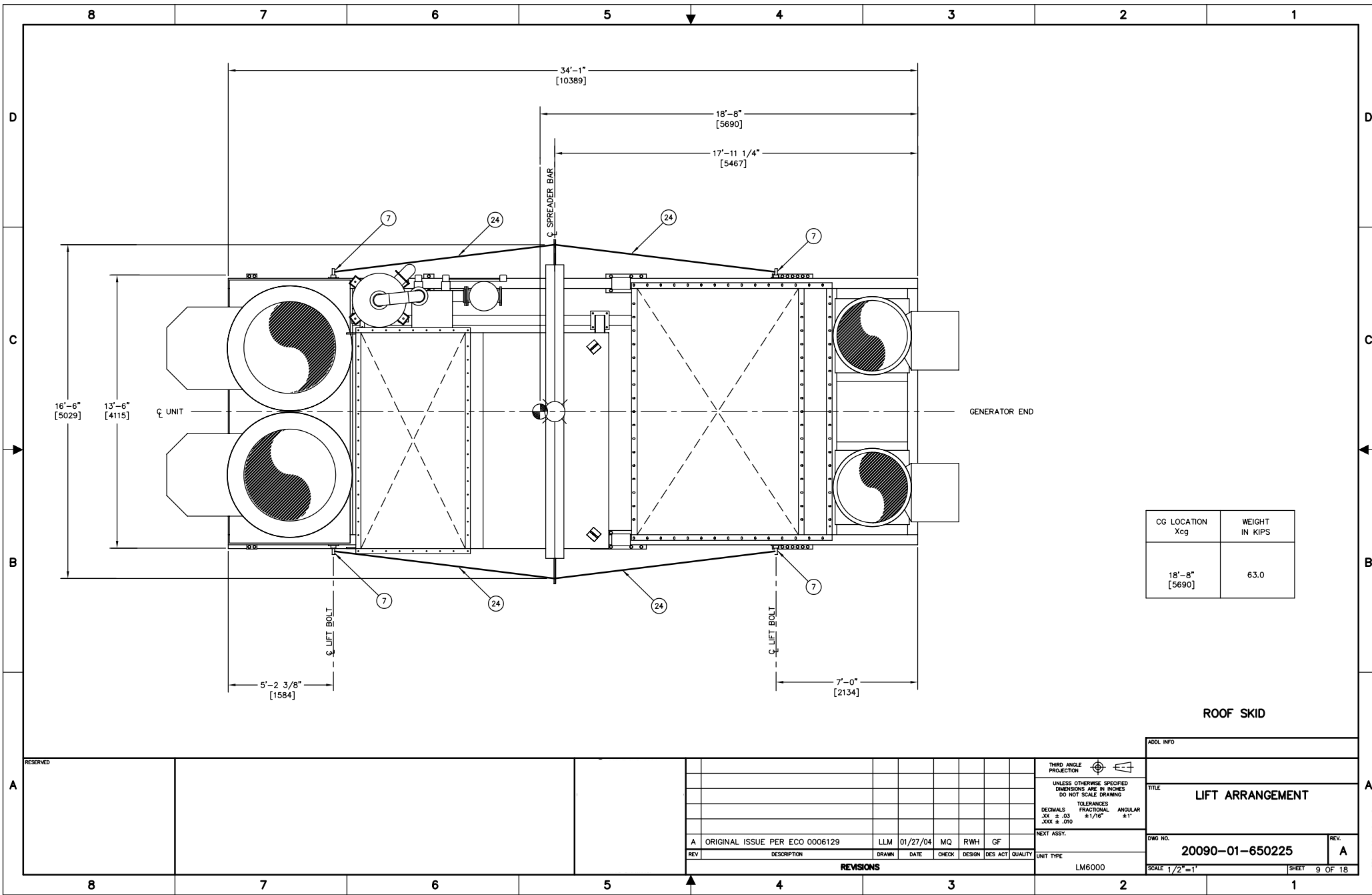




NOTES:

1. ROOF SKID IS NOT TO BE LIFTED WITH SILENCERS
(REFERENCE SHEET 9 & 10) ASSEMBLED TO SKID.

ROOF SKID



CG LOCATION Xcg	WEIGHT IN KIPS
18'-8" [5690]	63.0

ROOF SKID

ADDITIONAL INFO	
TITLE LIFT ARRANGEMENT	
DWG NO. 20090-01-650225	REV. A
SCALE 1/2"=1"	
SHEET 9 OF 18	

NOTE:

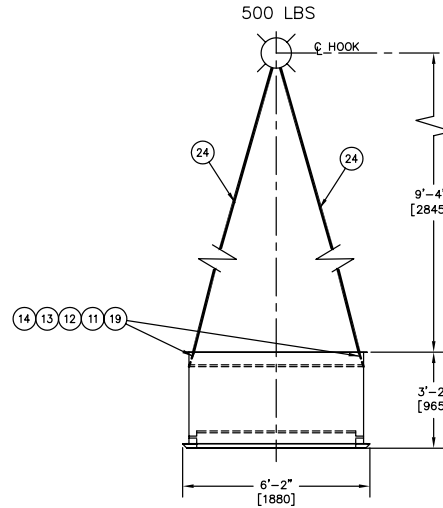
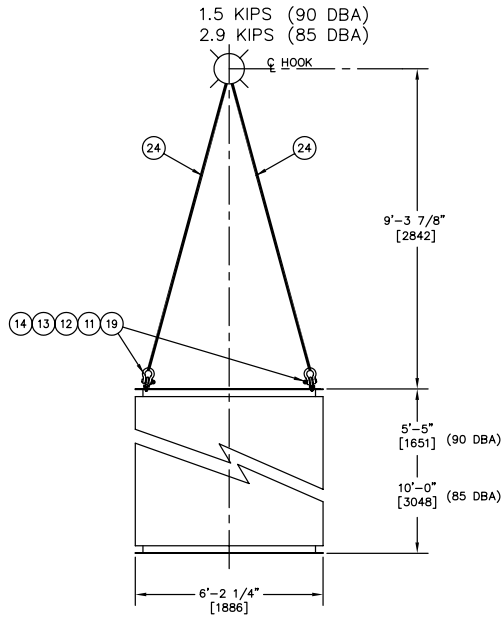
UTILIZE ONE (1) LIFTING SLING
(ITEM-6) PER LIFT.
SLING IS LOOPED OVER HOOK.

NOTE:

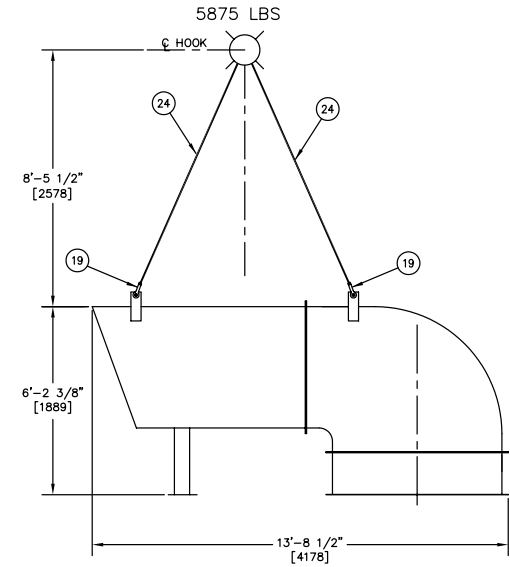
UTILIZE ONE (1) LIFTING SLING
(ITEM-6) PER LIFT.
SLING IS LOOPED OVER HOOK.

NOTE:

UTILIZE TWO (2) LIFTING SLINGS
(ITEM-6) PER LIFT.
ATTACH SLINGS DIAGONALLY TO FRAME.
LIFT IN CENTER OF LOOPED SLINGS.



TURBINE VENTILATION EXHAUST STACK CAP



**GENERATOR EXHAUST
DUCT/SILENCER**

SILENCER

**TURBINE VENTILATION
EXHAUST SILENCER**

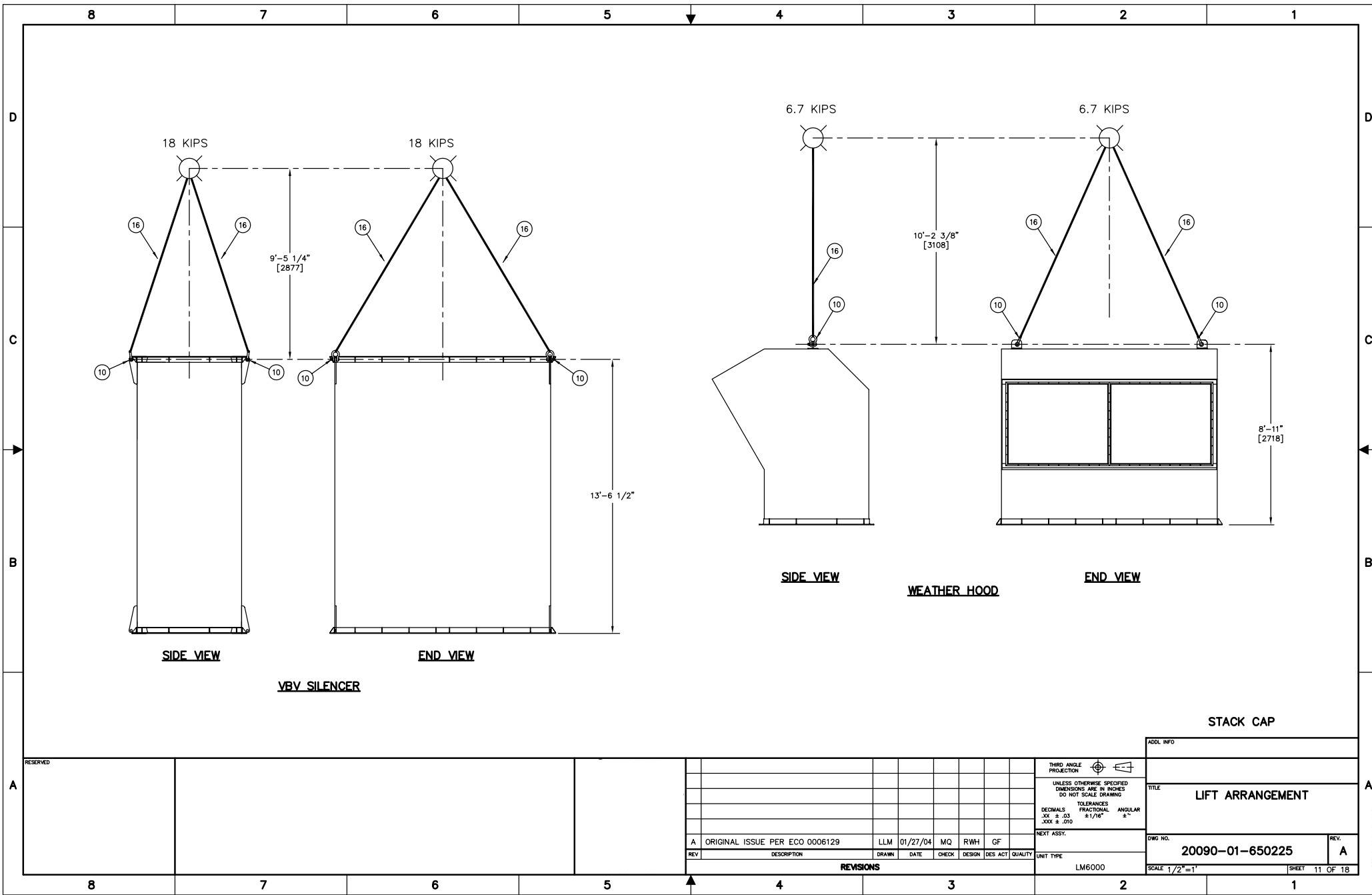
RESERVED

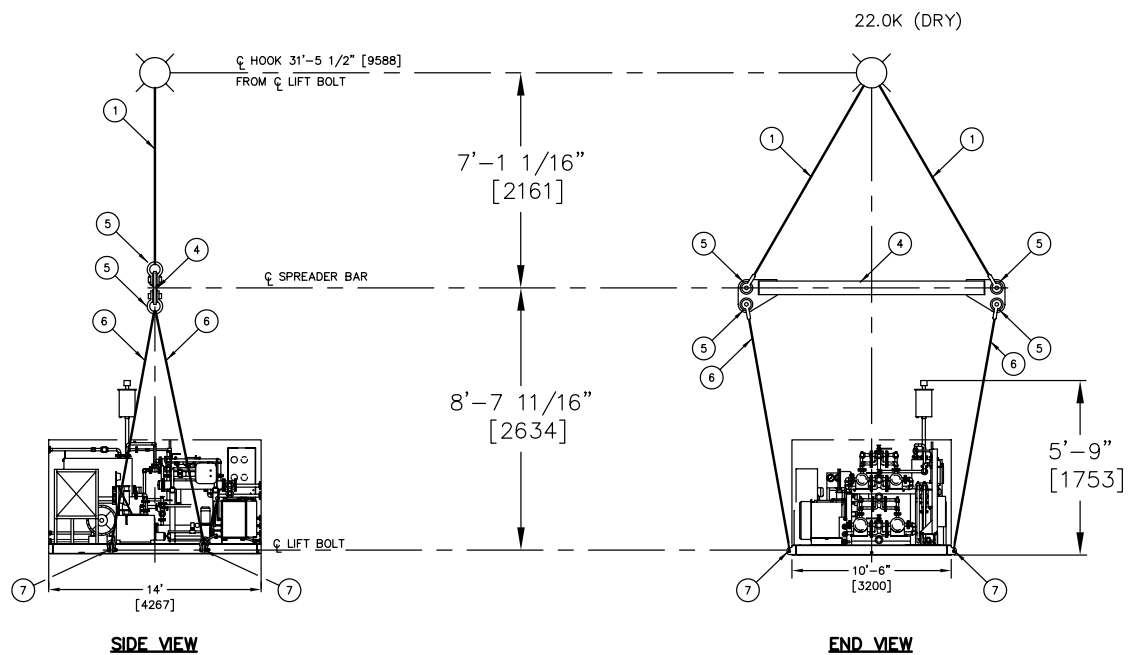
REVISIONS		DRAWN		DATE		CHECK		DESIGN		DES ACT		QUALITY	
A	ORIGINAL ISSUE PER ECO 0006129	LLM	01/27/04	MQ	RWH	GF							
REV	DESCRIPTION	DRAWN	DATE	CHECK	DESIGN	DES ACT	QUALITY	UNIT TYPE					

THIRD ANGLE
PROJECTION
UNLESS OTHERWISE SPECIFIED
DIMENSIONS ARE IN INCHES
DO NOT SCALE DRAWING
DECIMALS TOLERANCES
XX ± .03 FRACTIONAL
XXX ± .010 ANGULAR
± 1°

NEXT ASSY:
LM6000

ADDITIONAL INFO	
GE PACKAGED POWER, L.P.	
TITLE LIFT ARRANGEMENT	
DWG NO. 20090-01-650225	REV. A
SCALE 1/2"=1"	
SHEET 10 OF 18	





AUXILIARY SKID

RESERVED

THIRD ANGLE
PROJECTION

UNLESS OTHERWISE SPECIFIED
DIMENSIONS ARE IN INCHES
DO NOT SCALE DRAWING

DECIMALS TOLERANCES
XX ± .03 FRACTIONAL
XXX ± .010 ANGULAR ± 1°

NEXT ASSY:

LM6000

ADDL INFO

TITLE
LIFT ARRANGEMENT

DWG NO.

20090-01-650225

REV.

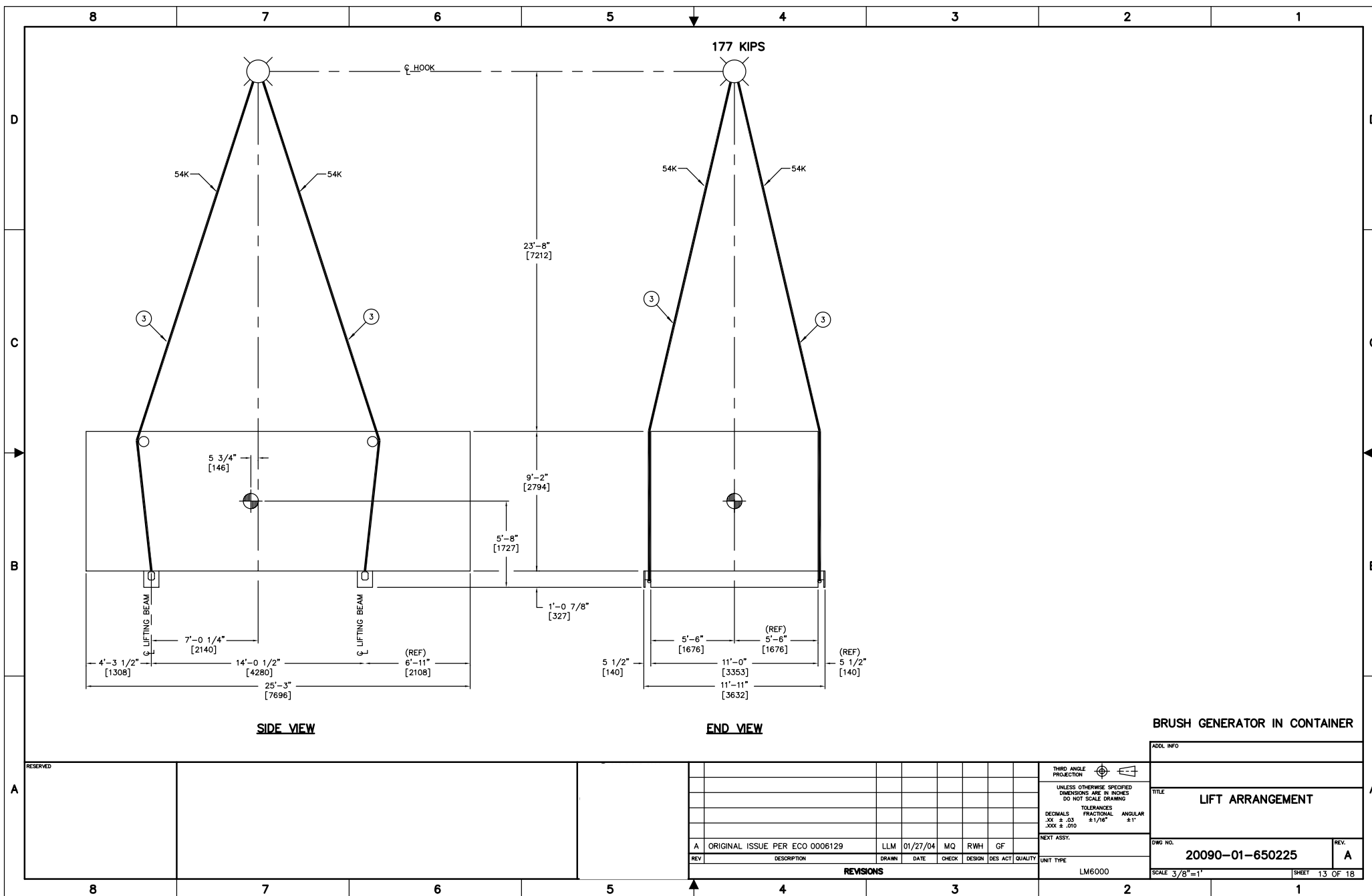
A

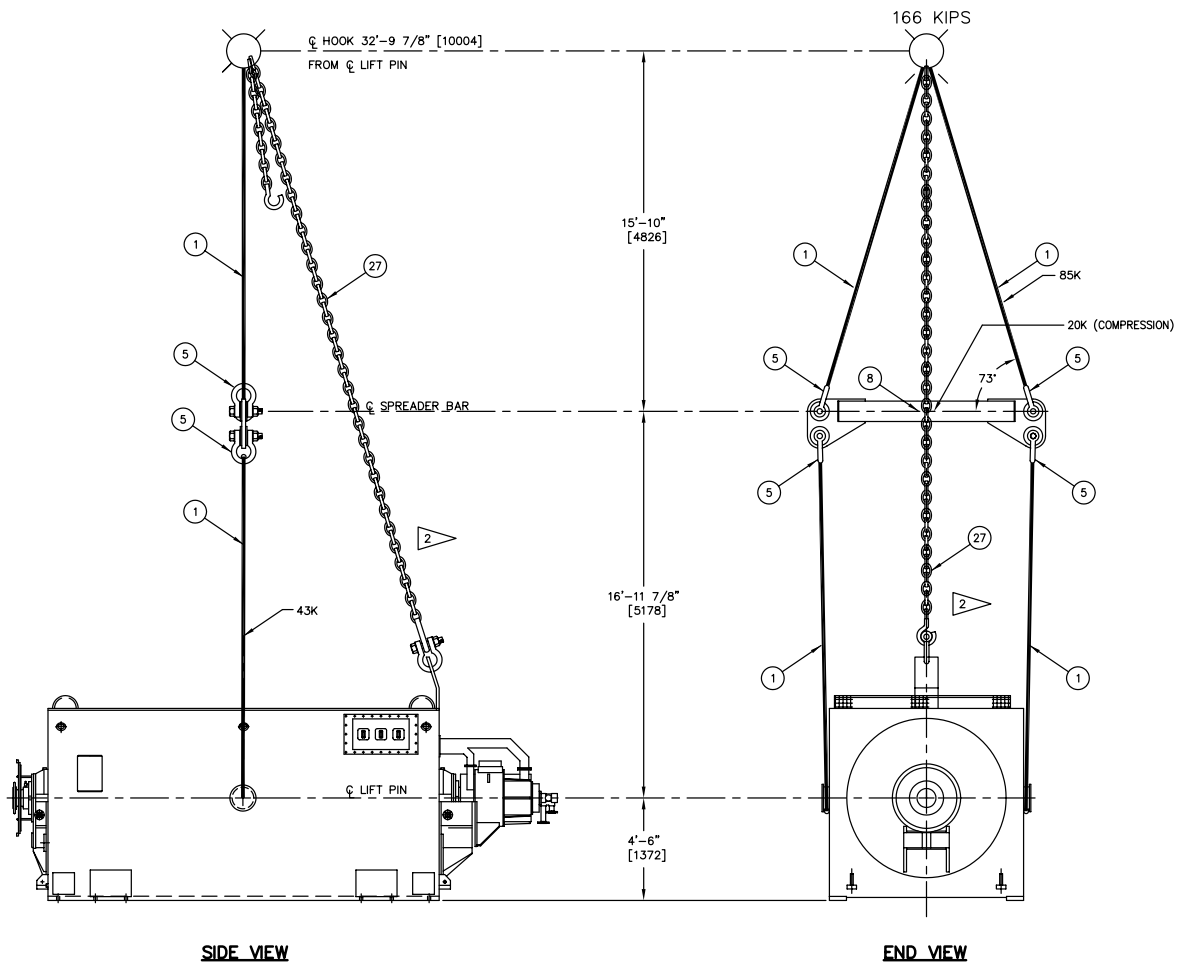
SCALE 1/2"=1"

SHEET 12 OF 18

REVISIONS

REV	DESCRIPTION	DRAWN	DATE	CHECK	DESIGN	DES ACT	QUALITY
A	ORIGINAL ISSUE PER ECO 0006129	LLM	01/27/04	MQ	RWH	GF	





NOTES:

- 1 LIFT ARRANGEMENT OF THIS GENERATOR IS TO BE USED FOR A CONTROLLED LIFT WITH DISTANCE OF MOVEMENT AND DURATION OF LIFT MINIMIZED
- 2 THE STABILIZATION CHAIN (ITEM 27) MUST BE ADJUSTED TO LENGTH TO KEEP GENERATOR LEVEL

BRUSH GENERATOR

RESERVED

REVISIONS						
REV	DESCRIPTION	DRAWN	DATE	CHECK	DESIGN	DES ACT QUALITY
A	ORIGINAL ISSUE PER ECO 0006129	LLM	01/27/04	MQ	RWH	GF

THIRD ANGLE PROJECTION

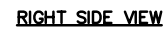
UNLESS OTHERWISE SPECIFIED
DIMENSIONS ARE IN INCHES
DO NOT SCALE DRAWING

DECIMALS TOLERANCES
XX ± .03 FRACTIONAL
XXX ± .010 ANGULAR ± 1°

NEXT ASSY:


LM6000

ADDITIONAL INFO	
TITLE	
LIFT ARRANGEMENT	
DWG NO.	REV.
20090-01-650225	A
SCALE 3/8"=1"	
SHEET 14 OF 18	



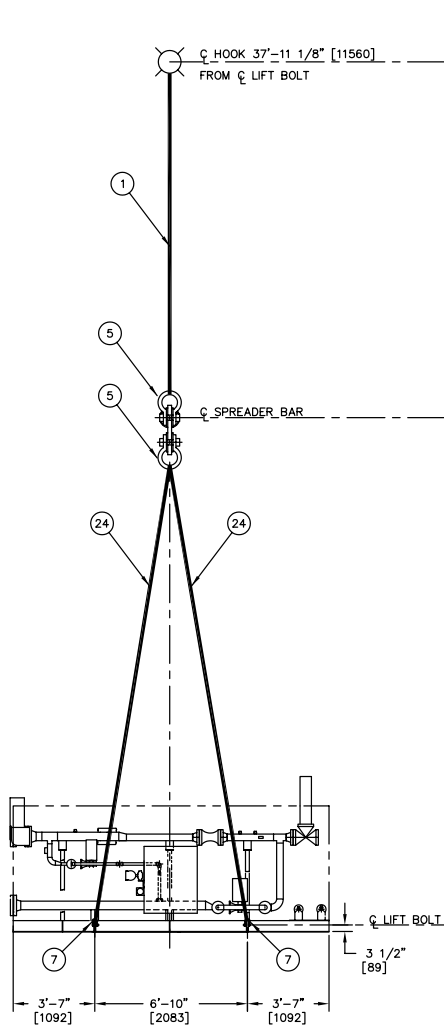
ADDL INFO	
TITLE	
LIFT ARRANGEMENT	
DWG NO.	REV.
20090-01-650225	A
SCALE 3/8"=1'	SHEET 17 OF 18

A	ORIGINAL ISSUE PER ECO 0006129			LLM	01/27/04	MQ	RWH	GF	
REV	DESCRIPTION			DRAWN	DATE	CHECK	DESIGN	DES ACT	QUALITY

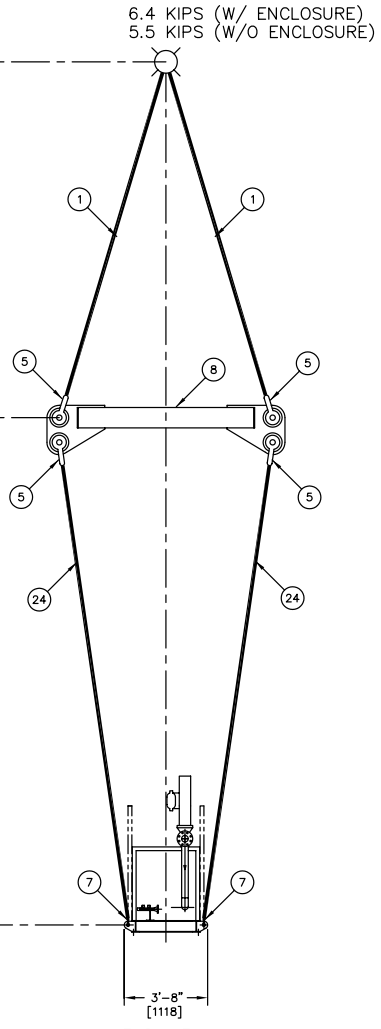
THIRD ANGLE PROJECTION			
UNLESS OTHERWISE SPECIFIED DIMENSIONS ARE IN INCHES DO NOT SCALE DRAWING			
DECIMALS	TOLERANCES FRACTIONAL	ANGULAR	
.XX ± .03	± 1/16"	± 1°	
.XXX ± .010			
NEXT ASSY			

NEXT ASSY.

LM6000



SIDE VIEW



END VIEW

NOTE:
 FOUR (4) CROSBY G-2130 6 1/2 TON SHACKLES ARE
 REQUIRED IF THE SKID LIFT EYE HOLES HAVE NOT
 INCREASED TO 1 3/4" DIA.

STEAM SKID

RESERVED

REV	DESCRIPTION	DRAWN	DATE	CHECK	DESIGN	DES ACT	QUALITY
A	ORIGINAL ISSUE PER ECO 0006129	LLM	01/27/04	MQ	RWH	GF	

REVISIONS

THIRD ANGLE
 PROJECTION
 UNLESS OTHERWISE SPECIFIED
 DIMENSIONS ARE IN INCHES
 DO NOT SCALE DRAWING
 DECIMALS TOLERANCES
 XX ± .03 FRACTIONAL ± 1/16" ANGULAR ± 1°
 XXX ± .010

NEXT ASSY:

LM6000

ADDL INFO	
TITLE LIFT ARRANGEMENT	
DWG NO. 20090-01-650225	REV. A
SCALE 3/8"=1" SHEET 18 OF 18	